

SC | Simolo Customs Ltd.



# NXT W2

THE STRONG, SILENT TYPE.



## Drive with purpose.

As our most versatile vehicle from our workfleet, this model is equally at home on the ranch or maintaining public roads.

Our **NXT W2** combines exceptional performance, innovative technology, and eco-friendly operation.

Our vehicles are engineered with features that ensure a safe and seamless ride.

# NXT W2

2 seats (forward +  
electric dump box)

**80 KM**

range

**5.5 H**

charge time

**87 ¢**

per charge

**72 v**

drivetrain



03.  
The ultimate  
workhorse.



## Specs.

### POWER.

#### MOTOR

7.5kW AC motor & 450a controller

#### BATTERY

72v 105ah / 8.1kW

#### CHARGING

110v outlet - 5.5 hour charge time

#### RANGE

80km+ (depending on temperature & terrain)

#### TOWING

1500lbs

#### DUMP BOX PAYLOAD

1000lbs

### DRIVING.

#### LIGHTING

LED headlights, brake lights, turn signals

#### WHEELS

12"

#### RANGE

80km+ (depending on temperature & terrain)

#### BRAKES

4 disc hydraulic brakes  
electromagnetic parking brake

### COMFORT.

#### SEATS

2

#### ENTERTAINMENT

Bluetooth stereo

#### SUSPENSION

SOFTEC coil over

### SIZE.

#### LENGTH

125" (dump box: 55")

#### WIDTH

48" (dump box: 45")

#### HEIGHT

79" (dump box: 9.5")

#### WEIGHT

1100lbs

# Why choose SC?

# 05.



---

## **8.1kw lithium battery pack**

Spend less time charging and more time working with a class leading capacity.

---

## **72 volt**

450 amp controller and 7.5kw AC motor makes this the most efficient and powerful vehicle in the industry.

---

## **4 disc hydraulic brakes**

4 disc brakes are standard on all of our vehicles, ensuring our customers are always in control.

---

## **EM brake**

With the automatic park brake, there is no concern of run away carts.

---

## **Softech suspension**

Our superbike inspired suspension takes the bumps out of your journey.

---

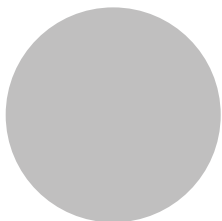
## **Custom colours available**

We can custom paint your vehicles any color you choose.

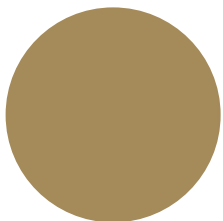
---

# Paint

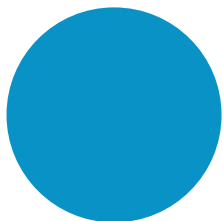
SOLID



dolphin grey

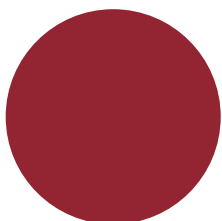


badlands sand

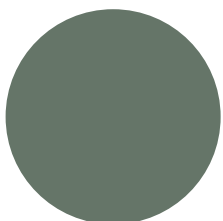


miami blue

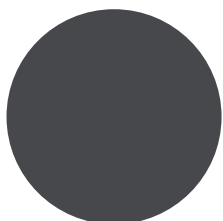
METALLIC



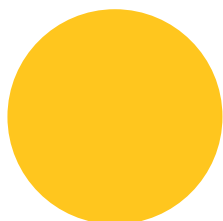
ruby red



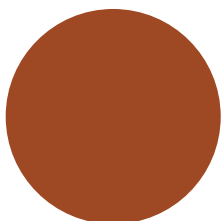
mamba green



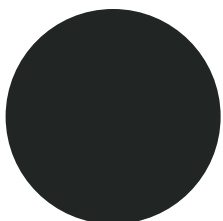
rocky mountain  
slate



okanagan sun



october orange



carbon black



pearl white





# 07.

NXT W2 BROCHURE

## Make a positive impact.

By choosing our **NXT W2**, you're not only enhancing your ride, but also contributing to a greener future.

# Elegant. Eco-friendly. Efficient.

SC, CANADA'S ONLY MANUFACTURER OF STREET LEGAL LOW-SPEED ELECTRIC VEHICLES.

## Get in touch with our experts

Head office: 250.545.8559 | [office@sccarts.ca](mailto:office@sccarts.ca)

Primary sales: 778.753.0100 | [sales@sccarts.ca](mailto:sales@sccarts.ca)

Vancouver Island sales: 778.745.4242 | [victoriasales@sccarts.ca](mailto:victoriasales@sccarts.ca)



[www.simolocustoms.ca](http://www.simolocustoms.ca)