



NXT F6
BRING THE GANG.

SC | Simolo Customs Ltd.





Drive with purpose.

With more seating than your typical full-size vehicle, this model is the ideal people mover for resorts, wineries, estates and just about anywhere you need to move large groups.

Our **NXT F6** model sets the standard for comfort, luxury and sustainability, by combining exceptional performance, innovative technology, and eco-friendly operation.

Our vehicles are engineered with features that ensure a safe and seamless ride.

NXT F6

6 seats (forward)

80 KM

range

5.5 H

charge time

87 ¢

per charge

72 v

drivetrain



03.
Elevating
group transportation.

NXT F6+2

8 seats (6 forward, 2 rear)

80 KM

range

5.5 H

charge time

87 ¢

per charge

72 v

drivetrain



04.

Elevating
group transportation.

Specs.

POWER.

MOTOR

7.5kW AC motor & 450a controller

BATTERY

72v 105ah / 8.1kW

CHARGING

110v outlet - 5.5 hour charge time

RANGE

80km+ (depending on temperature & terrain)

TOWING

1500lbs

DRIVING.

LIGHTING

LED headlights, brake lights, turn signals

WHEELS

12"

RANGE

80km+ (depending on temperature & terrain)

BRAKES

4 disc hydraulic brakes
electromagnetic parking brake

COMFORT.

SEATS

6 (8 optional)

ENTERTAINMENT

Bluetooth stereo

SUSPENSION

SOFTEC coil over

SIZE.

LENGTH

159"

WIDTH

47"

HEIGHT

75"

WEIGHT

1000lbs

Why choose SC?

06.



8.1kw lithium battery pack

Spend less time charging and more time cruising with a class leading capacity.

72 volt

450 amp controller and 7.5kw AC motor makes this the most efficient and powerful vehicle in the industry.

4 disc hydraulic brakes

4 disc brakes are standard on all of our vehicles, ensuring our customers are always in control.

EM brake

With the automatic park brake there is no concern of run away carts.

Softech suspension

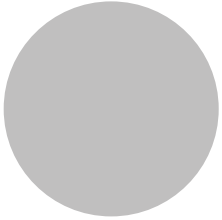
Our superbike inspired suspension takes the bumps out of your journey.

Custom colours available

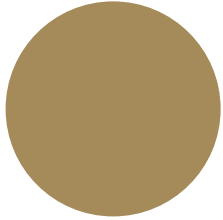
We can custom paint your vehicles any color you choose.

Paint

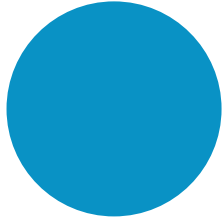
SOLID



dolphin grey

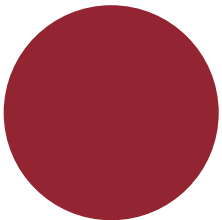


badlands sand

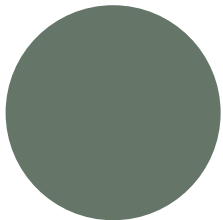


miami blue

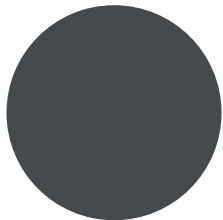
METALLIC



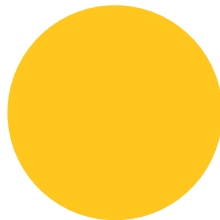
ruby red



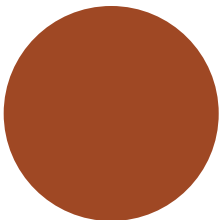
mamba green



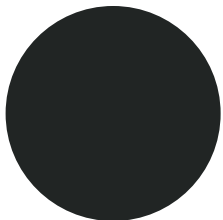
rocky mountain
slate



okanagan sun



october orange



carbon black



pearl white





08.

NXT F6 BROCHURE

Make a positive impact.

By choosing our **NXT F6**, you're not only enhancing your ride, but also contributing to a greener future.

Elegant, eco-friendly, efficient.

SC, CANADA'S ONLY MANUFACTURER OF STREET LEGAL LOW-SPEED ELECTRIC VEHICLES.

Get in touch with our experts

Head office: 250.545.8559 | office@sccarts.ca

Primary sales: 778.753.0100 | sales@sccarts.ca

Vancouver Island sales: 778.745.4242 | victoriasales@sccarts.ca



www.simolocustoms.ca